



*MADE IN ITALY EYEWEAR FACTORY*



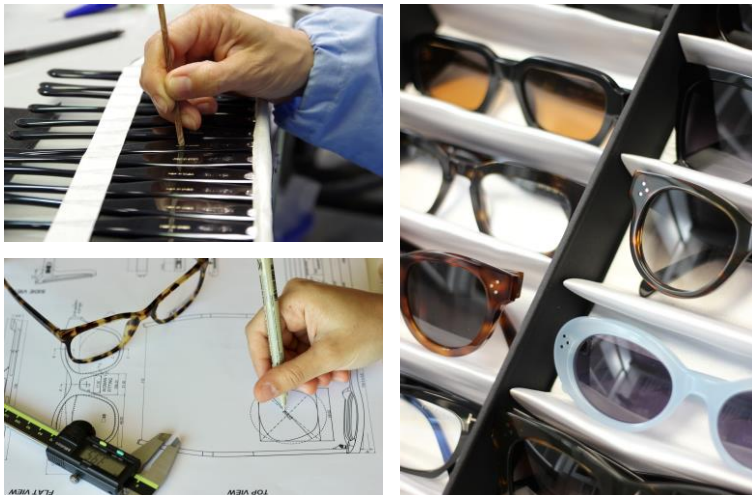
## Structure, experience, process, quality

On the 1st October 2020, iVision Group took over the historic Safilo plant in Martignacco consisting of latest generation technological systems and **over 150 highly specialized workers**.

Thanks to the **experience and know-how** of our operators, together with our management, **iVision Eyewear** become an international reference point in the eyewear sector with a **production capacity of 4,000 glasses / day**.



WE ARE ISO 9001  
CERTIFIED  
FOR EYEWEAR  
DESIGN,  
PRODUCTION AND  
SALES



**BOSS**  
HUGO BOSS

JIMMY CHOO

**ELIE SAAB**

**CARRERA**  
EYEWEAR SINCE 1956

TOMMY HILFINGER

**SAFILO**  
OCCHIALI DAL 1934

**HUGO**  
HUGO BOSS

MARC JACOBS

**Dior**

kate spade  
NEW YORK

**FENDI**

**MaxMara**

**SMITH**

**FOSSIL**

**GIVENCHY**  
PARIS

**Polaroid**

**Juicy Couture**

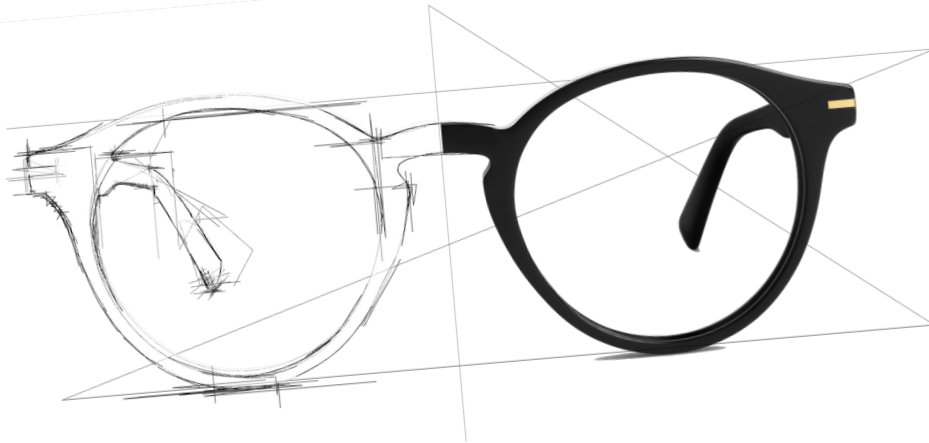
**pierre cardin**  
paris

*The major eyewear brands, customers of the former Safilo factory, before switching to iVision.*



# Where we are

In our **production plant in Martignacco (UD)**, thanks to advanced technologies and highly specialized skills, we shape the main brands in the world of eyewear: from design to prototyping, from industrialization to production planned according to your needs.



*Administrative office, technical office, commercial office,  
design office and production plant - Martignacco (UD)*



*Production in ITALY – our sales office in USA*

# What we offer

- Full cycle production: from the briefing to the finished and packaged product
- Dedicated planning in response to needs and product market launch
- Dedicated production area, based on customer needs



SOME OF THE BRANDS WE DESIGN,  
DEVELOP AND PRODUCE

BOTTEGA VENETA

LOEWE

CELINE

Dior

SAINT LAURENT

DANSHARIAN  
designed by Alain Mikli

LOUIS VUITTON

CUTLER AND GROSS

bôhten

RETROSUPERFUTURE®

Alexander McQUEEN

Off

White™

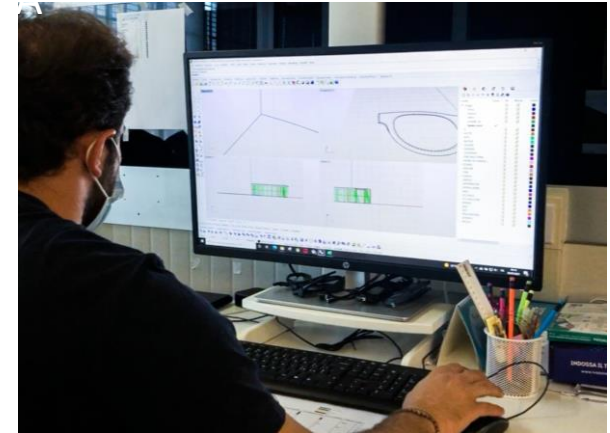
White™

ITALIA INDEPENDENT

WARBY PARKER

JACQUEMUS

long  
COLLECTION



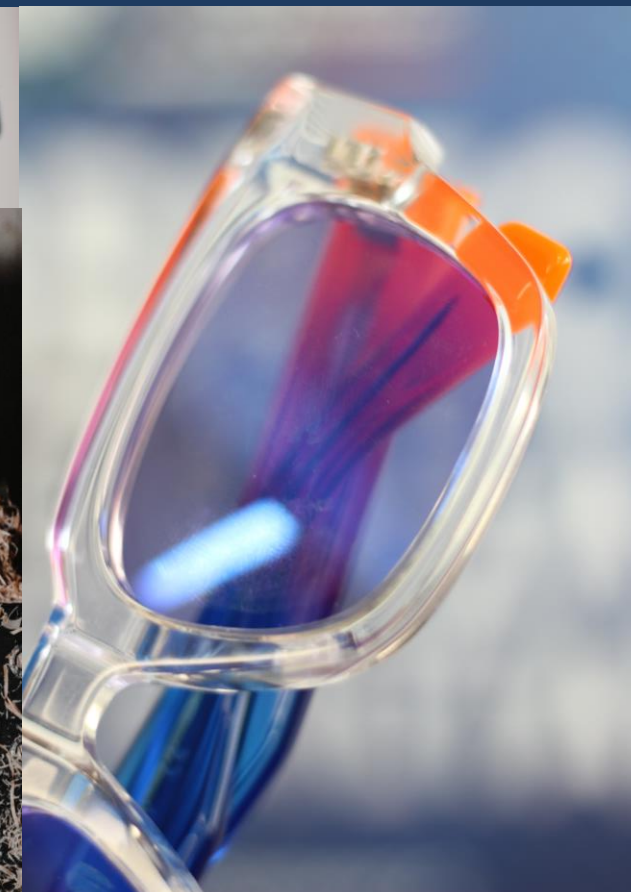
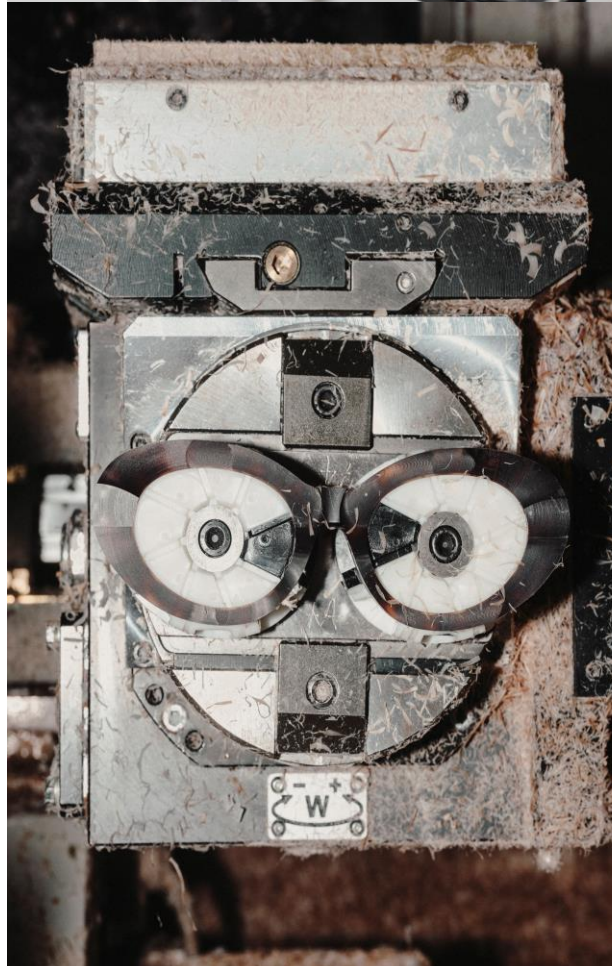


# Our strengths

iVision Eyewear is a reliable partner, technologically and structurally solid, able to satisfy the production needs, in numerical and qualitative terms, for every need.

## We guarantee:

- Top quality
- Reduced delivery times
- Competitive price
- Made in Italy



*- PHASE 1 -  
FROM DESIGN TO INDUSTRIALIZATION*

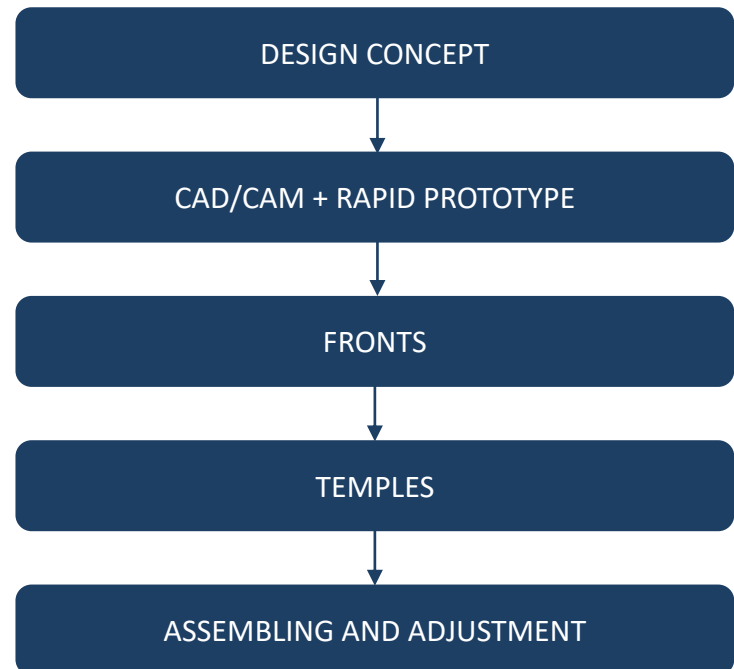
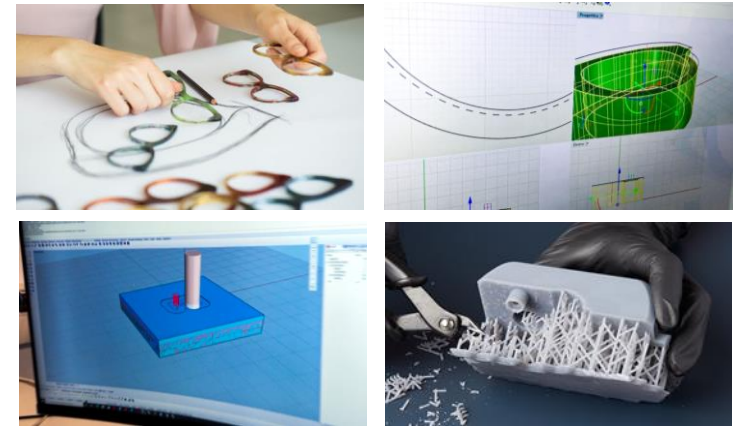
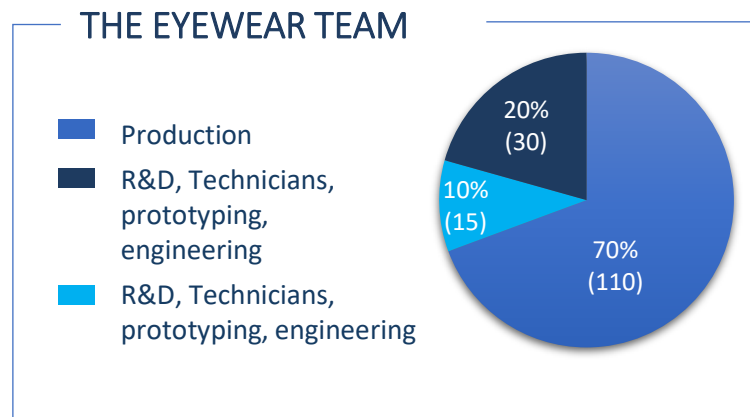
# Industrial Process

Our **production capacity** and the **expertise** of our **workers** are **available** to **customers** around the world for which we can develop dedicated **products** and **specifics phases**.

Our factory **responds** to **all the needs** of its **partner-customers** quickly, effectively and competitively.

Our **experience** in the world of eyewear is a **guarantee** in terms of **quality, service** and **efficiency**.

Our **solidity** allows us to respond to all needs also in terms of product innovation.

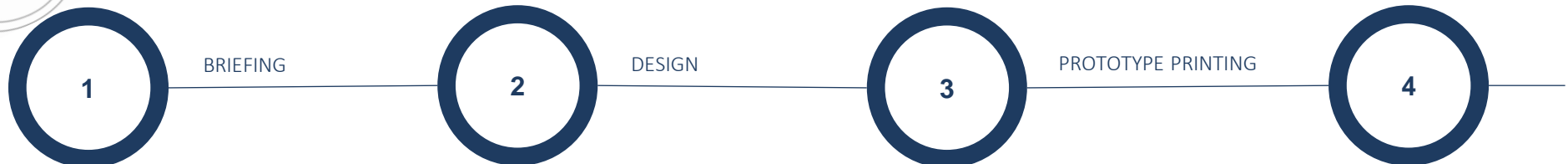
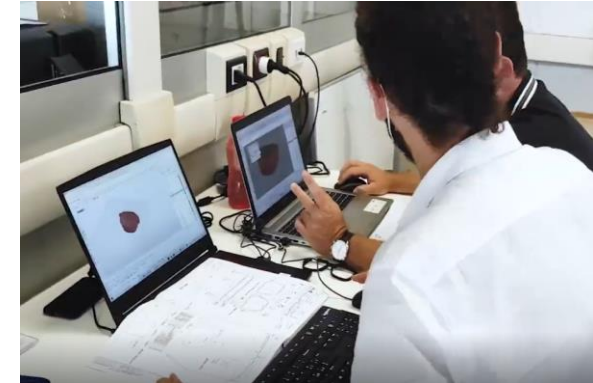
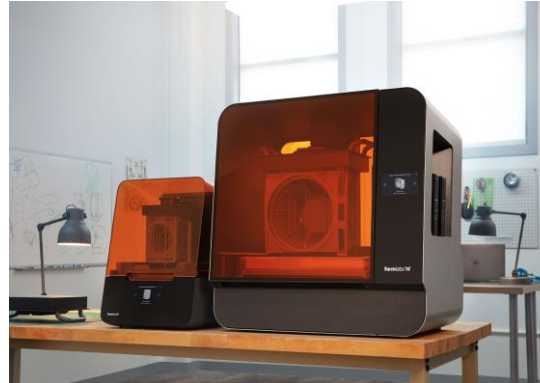


# Design

The needs of our customers, based on the project, are met through a **complete and standard process** adapted to specific needs:

- Ongoing briefings
- Development of CAD drawings
- Rapid prototyping

To proceed with the next steps

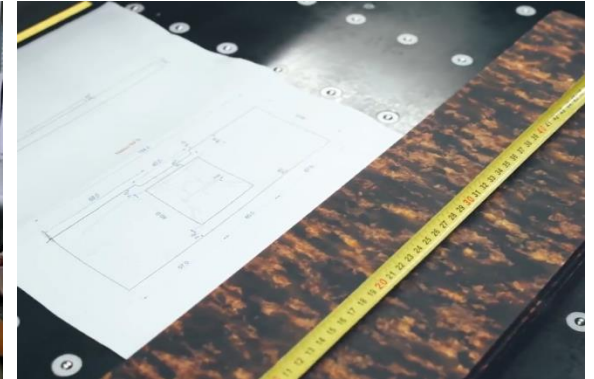
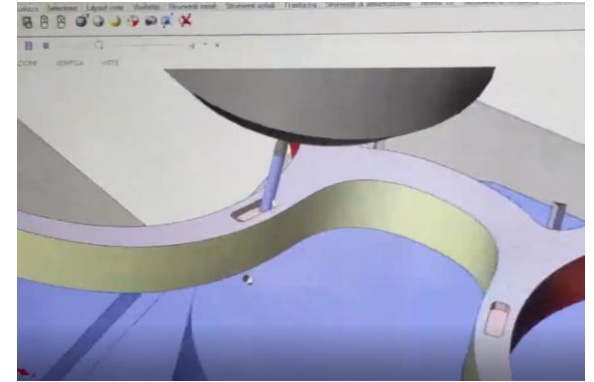




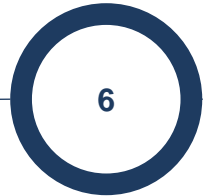
# From prototype to industrialization

Development proceeds with the implementation of the industrial project, from machine tests to planning of procurement for production:

- CAM development
- Industrial prototype development
- Implementation of times and detailed methods, model by model
- Preparation of the production process of detail



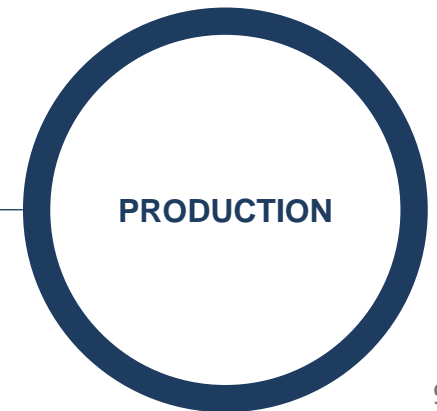
CAM AND  
MACHINE TESTS



DEFINITIVE PROTOTYPE



START PRODUCTION



*- PHASE 2 -  
PRODUCTION*

# Cutting and thickness reduction fronts and temples

The strips ready for processing are obtained from the raw acetate sheets.

The cutting and thicknessing department includes machines with high production capacity.

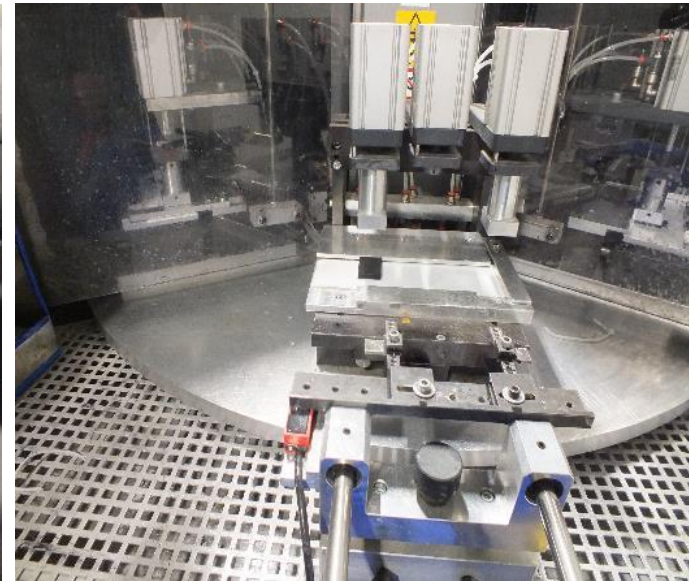
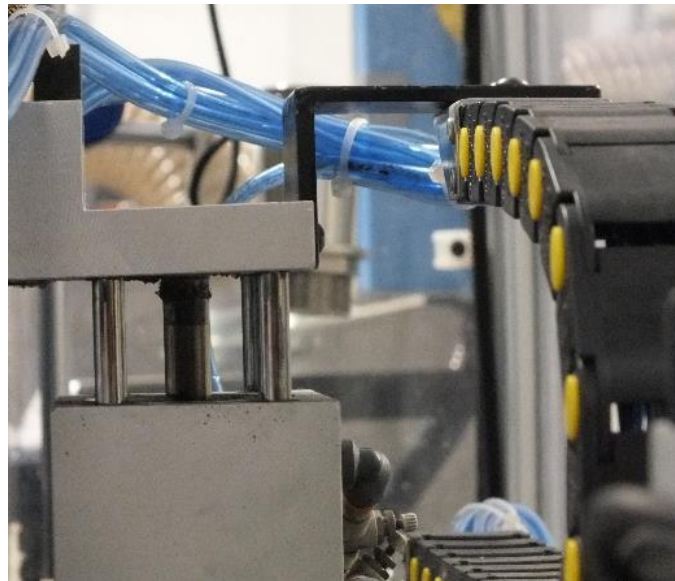




# Gluing and bending nose

Robotized ultrasonic gluing system and automatic folding.

Production capacity:  
4,000 fronts per day.



# Fronts: CNC milling

12 CMS Monofast  
5-axis CNC milling  
machines.

Production capacity of  
4,000 fronts per day.

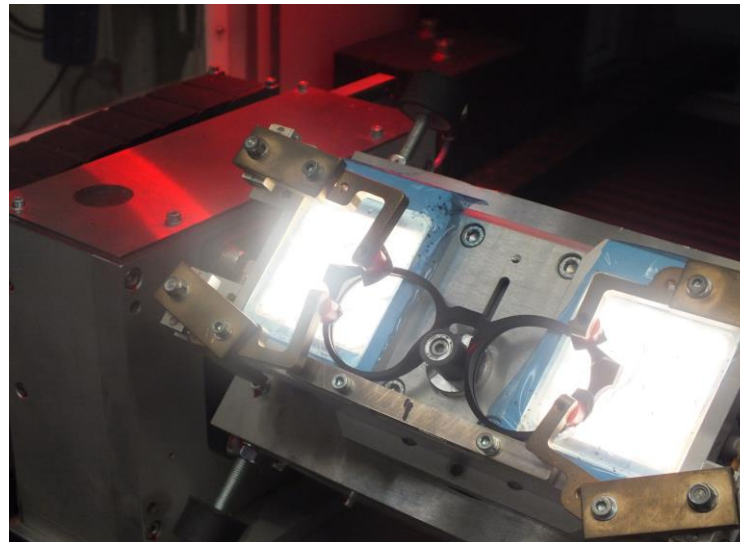




# Fronts: hinges insertion

Hinges insertion with LG machines, automatic loading, optical centering automation.

Production capacity of over 4,000 fronts per day.



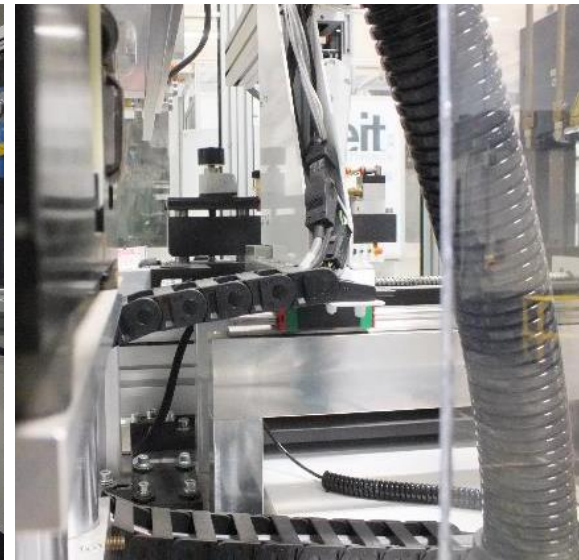
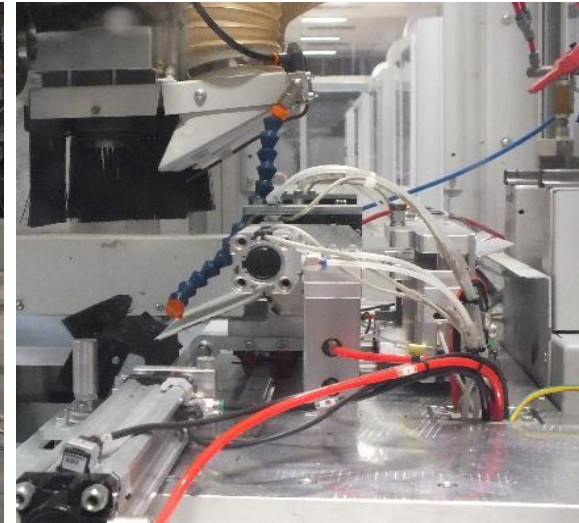


# Temples: milling shape & metal core insertion

Shaping with NC machines.

Core insertion with automatic and manual SEIT machines.

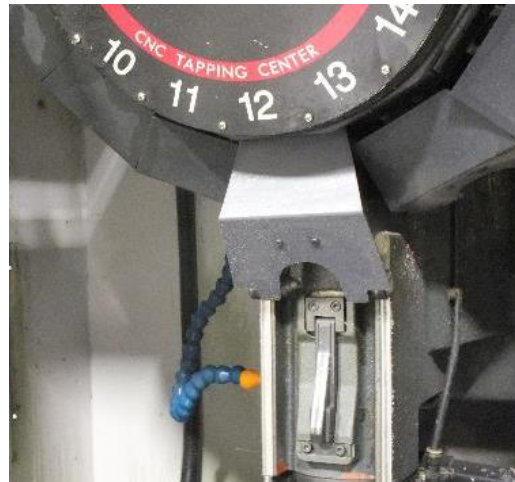
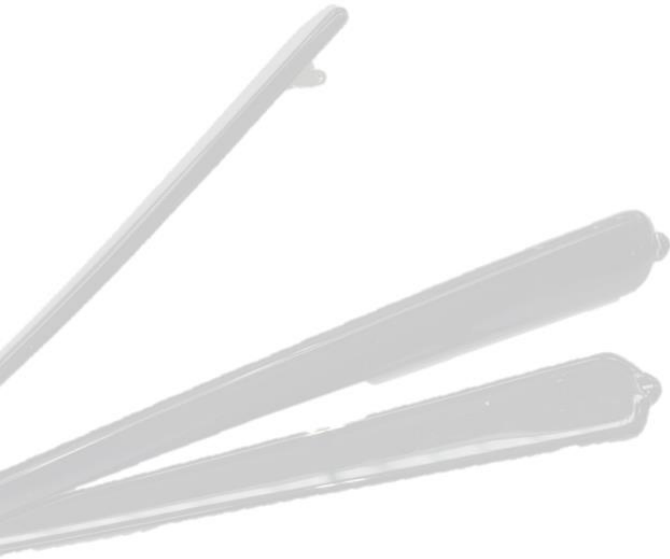
Production capacity of 6,000 pairs per day.



# Temples: CNC milling

Holes, seats and decorations of temples by means of CN machines.

Production capacity of 5,000 temples pairs per day.





# Tumbling process

Processing in 3 phases:

- Roughing
- Sanding
- Polishing

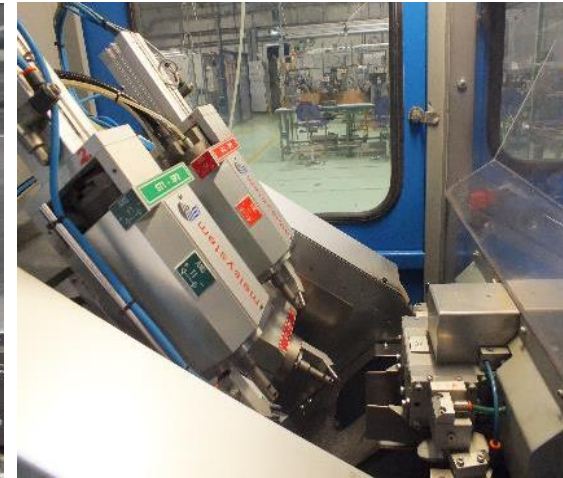




# Bending fronts and lens cutting

Curvature of the fronts are made with air heating ovens; capacity of 5,000 pieces per day.

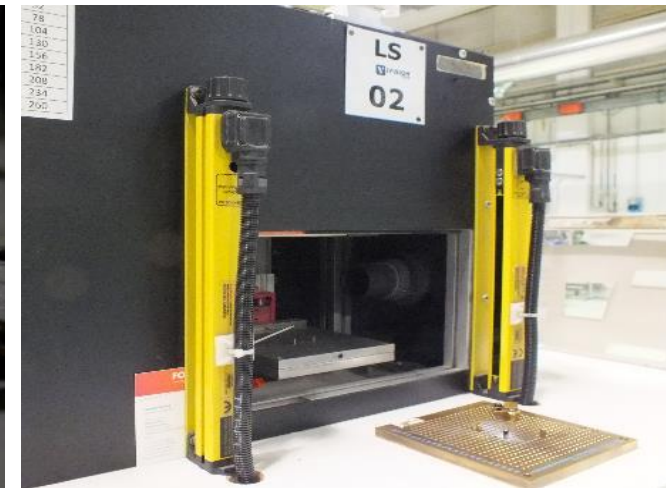
Lens shaping with Sphera machines; production capacity of 10,000 pieces per day.



# Laser Processing

Customization of  
temples, fronts and  
lenses.

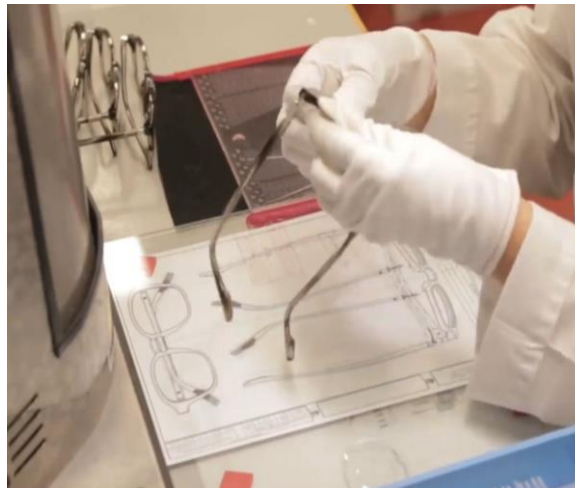
Production capacity of  
10,000 pieces per day.





# Assembling and adjustment

Assembly and finishing from semi-finished to finished product using specially designed work-lines.

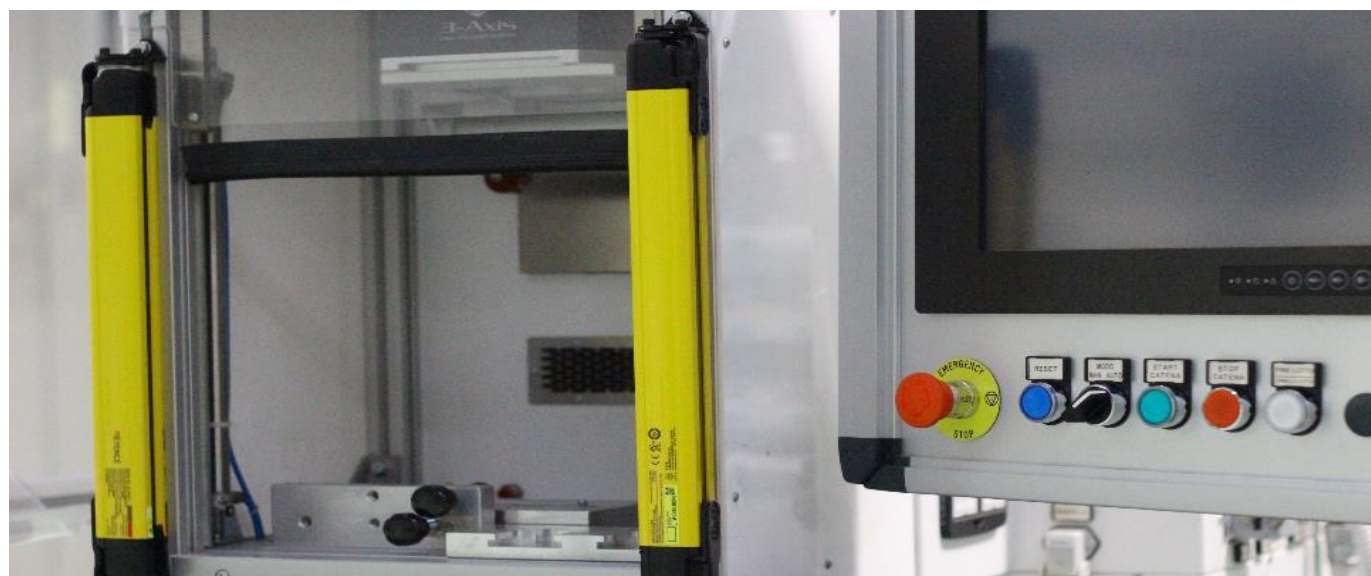




# Traceability

Automatic traceability  
and packaging lines.

Capacity of 7,000 pieces  
per day.



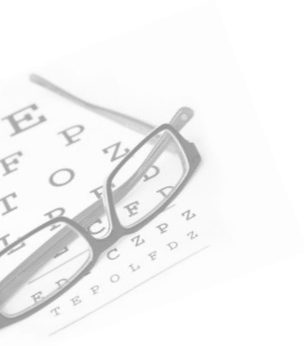
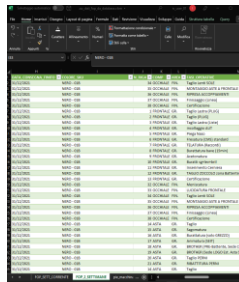
# *QUALITY, CONTROL, SKILL UPDATING*

# Quality control: craftsmanship and technology

Each phase of the production process in iVision Eyewear is subjected to strict quality controls.

This allows to avoid the propagation of errors and to better manage the workflow.

Each operator is called to an excellent quality level and our technological systems, built by our internal development department, allow us to trace and monitor phases, any rejects, times.



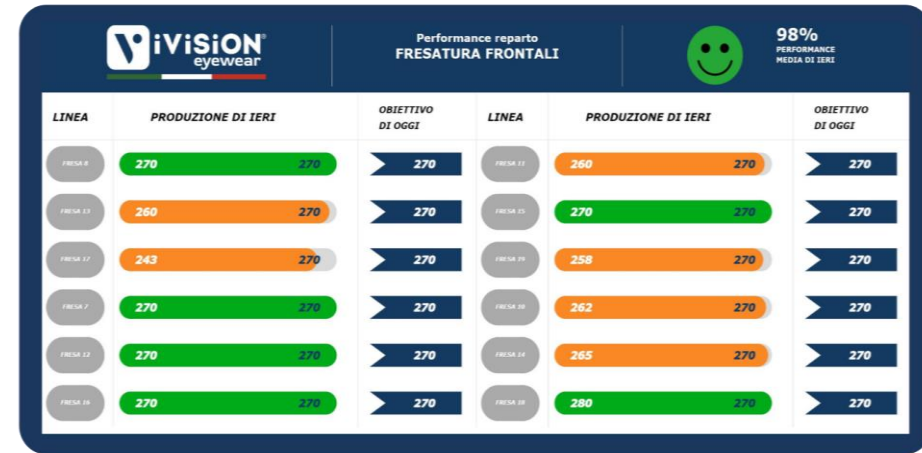


# Industry 4.0 and our “Talking Factory”

The production sector of iViSION Eyewear is made up of latest generation **efficient and performing machinery**.

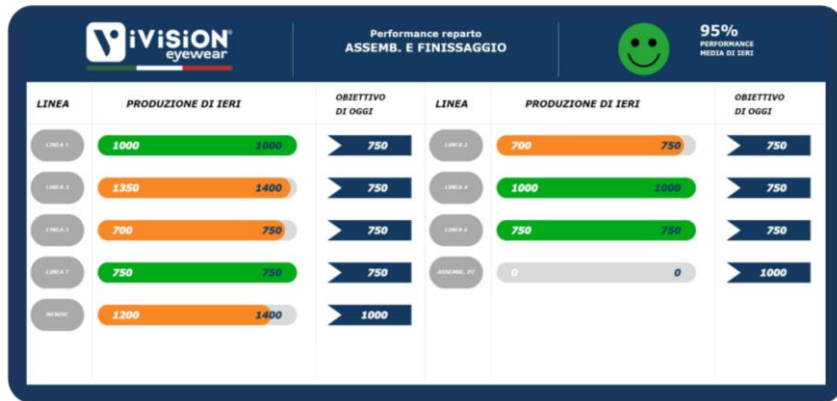
**Technology** is applied to each process, in combination with **human know-how**, the real engine of the industry.

By integrating machinery with **internally designed control dashboards**, operators can check performance at any time. The interconnection to machinery provides a **real-time overview** of any production process.



# Monitoring and sharing

Our control dashboard benefits the sharing of production information for operators, department heads and managers. By monitoring production, we encourage efficiency, and involve the different professionals more.



Daily monitoring about data production, of each department



Realtime communication to operators about the performance of each production area



Direct sharing of the current day's goals



Messages dedicated to the various production areas relating to the product, processes and customers



Maximum transparency towards the customer through constant updating on the progress of the order









# YOUR EYEWEAR PARTNER





## IVISION EYEWEAR by IVISION GROUP

### Registered office

iVision Tech srl, Viale della Repubblica, 209  
31100 - Treviso (Italia), P.IVA 05103540265

### Offices

Via Spilimbergo 154, Martignacco (UD)  
Tel +39 0432 1482743

### Offices and Production Plant

Via Spilimbergo 154, Martignacco (UD)

### Sales Offices

35 Lexington Ave., Greenwich, CONNECTICUT  
Tel +1 (914) 255-1330

[info@ivisioneyewear.it](mailto:info@ivisioneyewear.it)

[www.ivisioneyewear.it](http://www.ivisioneyewear.it)

[www.ivision-group.it](http://www.ivision-group.it)